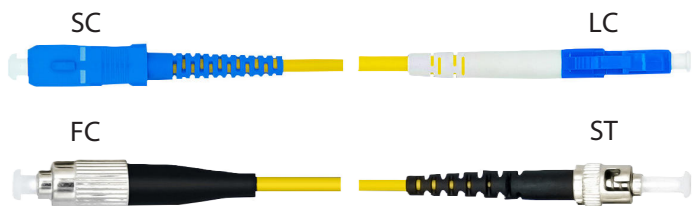
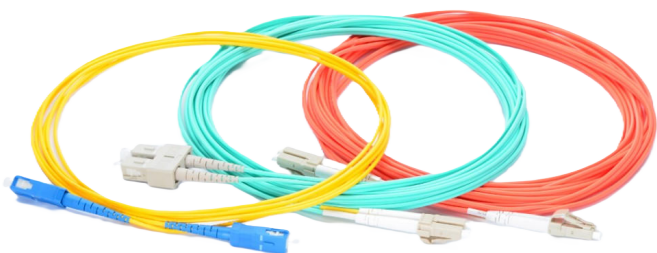


FIBER OPTIC ACCESSORIES

PATCH CORD, DUPLEX/SIMPLEX Single-mode/Multimode



APPLICATION

- Telecommunications.
- Local area network.
- Use for fusion splice
- Fiber optic sensors.
- CATV
- Testing instruments.

APPLICATION

The FOCOMM offers a comprehensive line of fiber jumpers for connecting fiber links. Choose from simplex or duplex, multimode (62.5/125 or 50/125) or single mode, SC or ST, jumpers, or pigtails. Assemblies are available in standard lengths of 1, 2, 3, and 5 meters, (custom lengths are also available). Each and every terminated connector is optically tested so that you can be assured that 100% of the FOCOMM-built cable assemblies meet the stringent performance limits as noted in the specifications chart. All jumpers are manufactured using the finest quality connectors and OFNR riser grade fiber

ORDER INFORMATION

PRODUCT	PART NUMBER
Patch Cord ST-ST, SM 9/125um, Duplex, 3M	F-PC-STST9-3-DX
Patch Cord ST-SC, SM 9/125um, Duplex, 3M	F-PC-STSC9-3-DX
Patch Cord ST-LC, SM 9/125um, Duplex, 3M	F-PC-STLC9-3-DX
Patch Cord ST-FC, SM 9/125um, Duplex, 3M	F-PC-STFC9-3-DX
Patch Cord SC-SC, SM 9/125um, Duplex, 3M	F-PC-SCSC9-3-DX
Patch Cord SC-FC, SM 9/125um, Duplex, 3M	F-PC-SCFC9-3-DX
Patch Cord LC-SC, SM 9/125um, Duplex, 3M	F-PC-LCSC9-3-DX
Patch Cord LC-LC, SM 9/125um, Duplex, 3M	F-PC-LCLC9-3-DX
Patch Cord LC-FC, SM 9/125um, Duplex, 3M	F-PC-FCLC9-3-DX
Patch Cord FC-FC, SM 9/125um, Duplex, 3M	F-PC-FCFC9-3-DX

PERFORMANCE

- Typical Insertion Loss Single-mode: 0.15dB, Multi-mode: 0.15dB.
- Typical Return Loss (*), Single-mode: 50dB, Multi-mode: 20dB
- Cable retention 200N
- Operating Temperature :-40~+85 oC
- Storage Temperature: -45~+85 oC

FEATURES

- Compatible with FC, SC, LC standard & ST. connector.
- PC ferrule with 20mm radius fast polishing.
- Ferrules-Zirconia Ceramic, Pre-riedused
- 8 degree angle PC ferrule with ultra low insertion loss.
- Cable Diameter 0.9 mm or 2 mm or 3 mm.
- Low back reflection loss.
- Easy to handle Environmentally stable.
- The cable is DUPLEX, size 2.0 mm.
- Fiber optic cable with LC/UPC to LC/UPC Duplex connectors.
- It's a factory-installed assembly line and 100% decoded.

STANDARD

- ISO/IEC 11801:2017,ANSI/TIA-568-C.3,ANSI/TIA-568.3-D,FOTP EIA/TIA-455 ,IEC 60793, IEC60794, IEC 60794-2-30, ITU-T G.652D (Singlemode), ITU-T G.651(Multimode), RoHS Compliant, GR-326