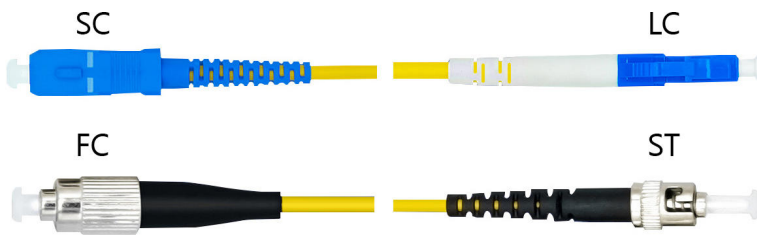
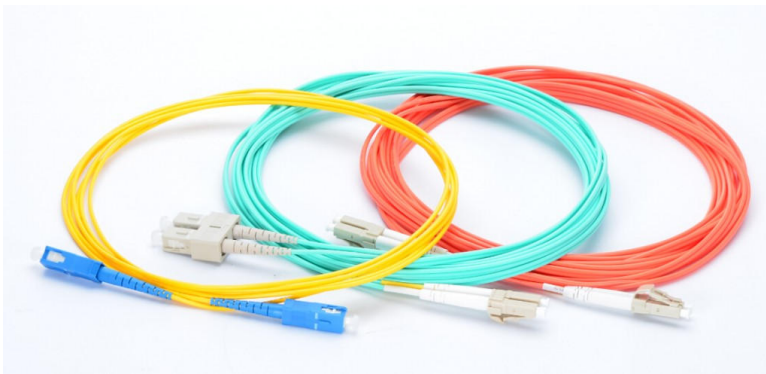


FIBER OPTIC ACCESSORIES

PATCH CORD, DUPLEX/SIMPLEX, Single-mode/Multimode



PERFORMANCE

- Typical Insertion Loss Single-mode: 0.15dB, Multi-mode: 0.15dB.
- Typical Return Loss (*), Single-mode: 50dB, Multi-mode: 20dB
- Cable retention 200N
- Operating Temperature :-40~+85 °C
- Storage Temperature: -45~+85 °C

FEATURES

- Compatible with FC, SC, LC standard & ST. connector.
- PC ferrule with 20mm radius fast polishing.
- Ferrules-Zirconia Ceramic, Pre-rediused
- 8 degree angle PC ferrule with ultra low insertion loss.
- Cable Diameter 0.9 mm or 2 mm or 3 mm.
- Low back reflection loss.
- Easy to handle Environmentally stable.
- The cable is DUPLEX, size 2.0 mm.
- Fiber optic cable with LC/UPC to LC/UPC Duplex connectors.
- It's a factory-installed assembly line and 100% decoded.

STANDARD

- ISO/IEC 11801:2017,ANSI/TIA-568-C.3,ANSI/TIA-568.3-D,FOTP EIA/TIA-455 ,IEC 60793, IEC60794, IEC 60794-2-30, ITU-T G.652D (Singlemode), ITU-T G.651(Multimode), RoHS Compliant, GR-326

APPLICATION

- Telecommunications.
- Local area network.
- Use for fusion splice
- Fiber optic sensors.
- CATV
- Testing instruments.

DESCRIPTION

The FOCOMM offers a comprehensive line of fiber jumpers for connecting fiber links. Choose from simplex or duplex, multimode (62.5/125 or 50/125) or single mode, SC or ST, jumpers, or pigtails. Assemblies are available in standard lengths of 1, 2, 3, and 5 meters,(custom lengths are also available). Each and every terminated connector is optically tested so that you can be assured that 100% of the FOCOMM-built cable assemblies meet the stringent performance limits as noted in the specifications chart. All jumpers are manufactured using the finest quality connectors and OFNR riser grade fiber

ORDER INFORMATION

| PRODUCT | PART NUMBER |
|--|-----------------|
| Patch Cord ST-ST, SM 9/125um, Duplex, 3M | F-PC-STST9-3-DX |
| Patch Cord ST-SC, SM 9/125um, Duplex, 3M | F-PC-STSC9-3-DX |
| Patch Cord ST-LC, SM 9/125um, Duplex, 3M | F-PC-STLC9-3-DX |
| Patch Cord ST-FC, SM 9/125um, Duplex, 3M | F-PC-STFC9-3-DX |
| Patch Cord SC-SC, SM 9/125um, Duplex, 3M | F-PC-SCSC9-3-DX |
| Patch Cord SC-FC, SM 9/125um, Duplex, 3M | F-PC-SCFC9-3-DX |
| Patch Cord LC-SC, SM 9/125um, Duplex, 3M | F-PC-LCSC9-3-DX |
| Patch Cord LC-LC, SM 9/125um, Duplex, 3M | F-PC-LCLC9-3-DX |
| Patch Cord LC-FC, SM 9/125um, Duplex, 3M | F-PC-FCLC9-3-DX |
| Patch Cord FC-FC, SM 9/125um, Duplex, 3M | F-PC-FCFC9-3-DX |

| PRODUCT | PART NUMBER |
|---|-----------------|
| Patch Cord ST-ST, MM 50/125um, Duplex, 3M | F-PC-STST5-3-DX |
| Patch Cord ST-SC, MM 50/125um, Duplex, 3M | F-PC-SCST5-3-DX |
| Patch Cord ST-LC, MM 50/125um, Duplex, 3M | F-PC-LCST5-3-DX |
| Patch Cord ST-FC, MM 50/125um, Duplex, 3M | F-PC-FCST5-3-DX |
| Patch Cord SC-SC, MM 50/125um, Duplex, 3M | F-PC-SCSC5-3-DX |
| Patch Cord SC-LC, MM 50/125um, Duplex, 3M | F-PC-LCSC5-3-DX |
| Patch Cord SC-FC, MM 50/125um, Duplex, 3M | F-PC-FCSC5-3-DX |
| Patch Cord LC-LC, MM 50/125um, Duplex, 3M | F-PC-LCLC5-3-DX |
| Patch Cord LC-FC, MM 50/125um, Duplex, 3M | F-PC-FCLC5-3-DX |
| Patch Cord FC-FC, MM 50/125um, Duplex, 3M | F-PC-FCFC5-3-DX |