

RACK AND CABINET PRODUCT

Internet Data Center (IDC) Series



APPLICATION

Widely applied in Finance, Securities and Data Centre and adpted by professional servers' network providers, as IBM, SUN, HP, COMPAQ, DELL, etc .

MATERIALS

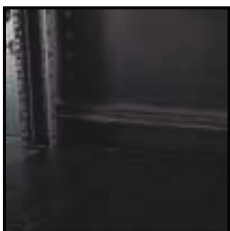
Electro-galvanized Cold-rolled steel sheet. Thickness for frame 2.0mm, mounting rail 2.0mm, side panel 1.5mm, fixed shelf 1.5mm

STANDARD

Comply with ANSI/EIARS-310-D, BS 5954, DIN41491;PART1, IEC60297-2, DIN41494;PART7,GB/T3047.2-92 standard. Compatible with metric, ETSI and 19 inch international standard.

FEATURE

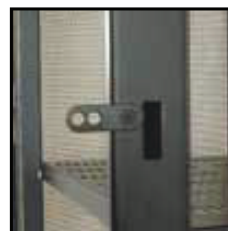
- Surface finish: degreasing, pickling, phosphoric, powder coating .
The thickness of powder coating is 80µm-100µm.
- Curved perforated front door and double-section rear door enable equipment protection, reliable operation with ventilation rate above 80%.
- Double-section side panels, each panel can be easily assembled separately.
- Top and bottom wiring channel can be closed and adjustable.
- Backside with a pair of vertical cable management.
- Mounting rail with U mark.
- Efficient and solid cabinet connection.
- With earthing kits.
- Advanced lock.
- Optional plinth to meet under-base wiring, ventilation and rat-proof.
- Adjustable feet and heavy duty castors are available at the same time , static loading: 1000KG.
- Full range of optional accessories.



Frame with scale mark



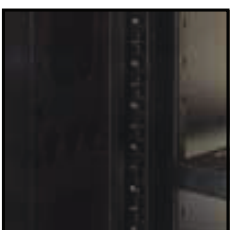
Mounting rail with U mark



Connection Kits



Removable double-section side panel



Backside with a pair of vertical cable management



Enhanced hinge



Curved perforated door



Steel casement door

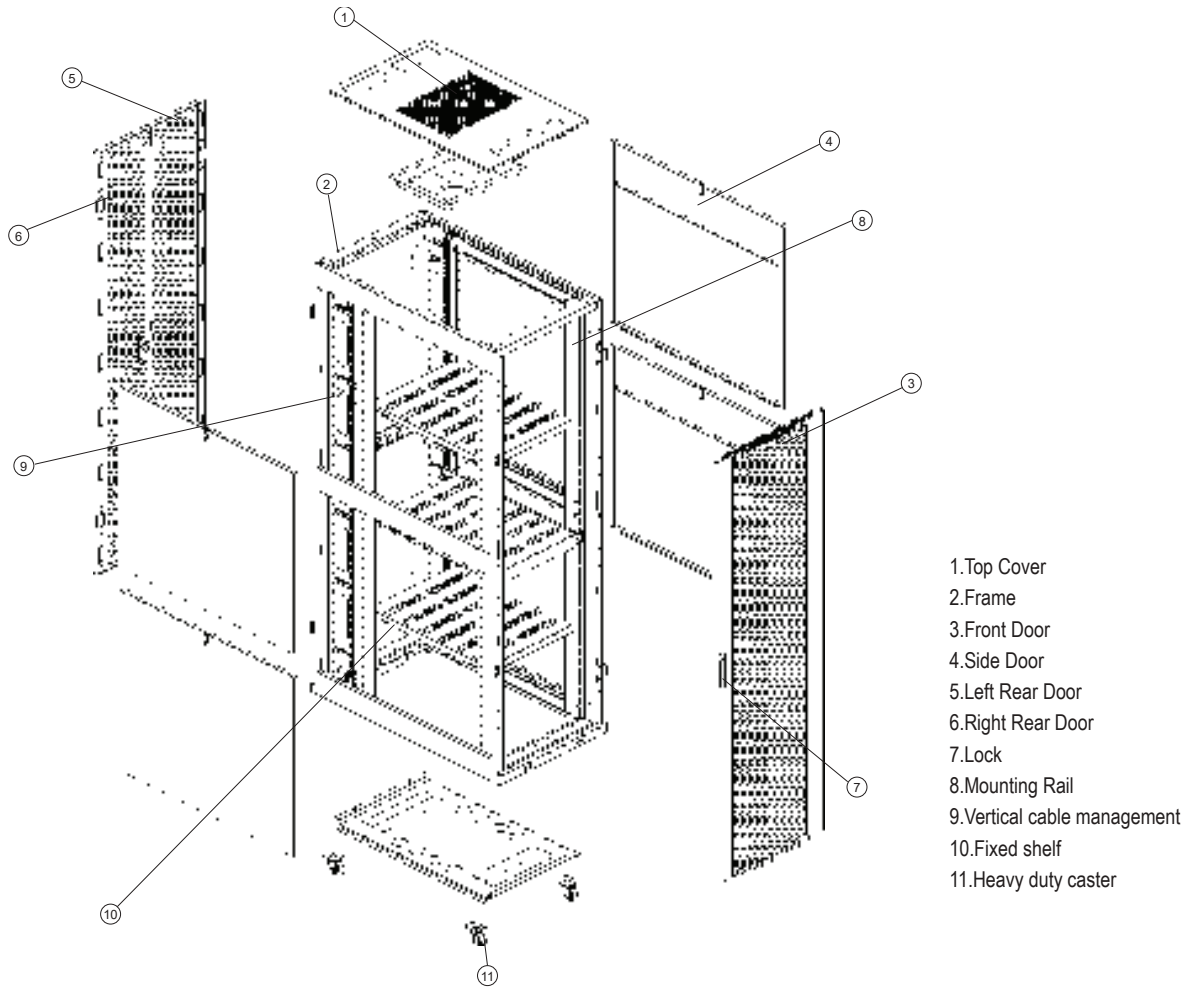
FOCOMM (THAILAND) CO., LTD

12 Soi Sukhaphiban 5 Soi 5 Yaek 3, Tha Raeng Subdistrict, Bang Khen District Bangkok 10220

Email : info@focomm-cabling.com www.focomm-cabling.com



STRUCTURAL



ORDER INFORMATION

PRODUCT	DESCRIPTION	PART NUMBER
36U	19" Internet Data Center, 36U Curved Perforated Door, Double Swing Door 600x600x1790 (mm)	R-D36-6060-KLA
	19" Internet Data Center, 36U Curved Perforated Door, Double Swing Door 600x800x1790 (mm)	R-D36-6080-KLA
	19" Internet Data Center, 36U Curved Perforated Door, Double Swing Door 600x1100x1790 (mm)	R-D36-6011-KLA
	19" Internet Data Center, 36U Curved Perforated Door, Double Swing Door 800x800x1790 (mm)	R-D36-8080-KLA
	19" Internet Data Center, 36U Curved Perforated Door, Double Swing Door 800x1100x1790 (mm)	R-D36-8011-KLA
42U	19" Internet Data Center, 42U Curved Perforated Door, Double Swing Door 600x600x2050 (mm)	R-D42-6060-KLA
	19" Internet Data Center, 42U Curved Perforated Door, Double Swing Door 600x800x2050 (mm)	R-D42-6080-KLA
	19" Internet Data Center, 42U Curved Perforated Door, Double Swing Door 600x1100x2050 (mm)	R-D42-6011-KLA
	19" Internet Data Center, 42U Curved Perforated Door, Double Swing Door 800x800x2050 (mm)	R-D42-8080-KLA
	19" Internet Data Center, 42U Curved Perforated Door, Double Swing Door 800x1100x2050 (mm)	R-D42-8011-KLA
4 Door 42U	19" Internet Data Center, 42U, 4 Door, Double Swing Door 800x1100x2050 (mm)	R-D42-4D-8011-KLA